

AUTOEDGENET V 5.0

USER DOCUMENTATION

**Released May 2005
Ver 1.0**

INDEX

<u>TOPIC</u>	<u>Page No</u>
OBJECTIVE	3
KEY BENEFITS.....	3
ACCESS	3
LOGIN	4
USER CODE	4
PASSWORD.....	4
USER INITIALS	4
TIME OUT.....	4
SELECTING A VEHICLE.....	5
SELECTION SEARCH.....	5
SEARCH IN.....	6
YEAR RANGE.....	6
MAKE.....	6
MODEL or VARIANT	6
SERIES	6
KEYWORD	6
NVIC SEARCH.....	7
MATCHING RECORDS	8
MODEL DETAILS, SPECIFICATION AND PRICING HISTORY	9
MODEL DETAILS.....	9
MODEL SPECIFICATION.....	10
PRICING HISTORY	11
HELP FILES.....	13

OBJECTIVE

The all new Autoedgenet V5 is designed to give you greater ease of use and provide search results quicker. The search process is now significantly more flexible allowing you the ability to enter different levels of information.

KEY BENEFITS

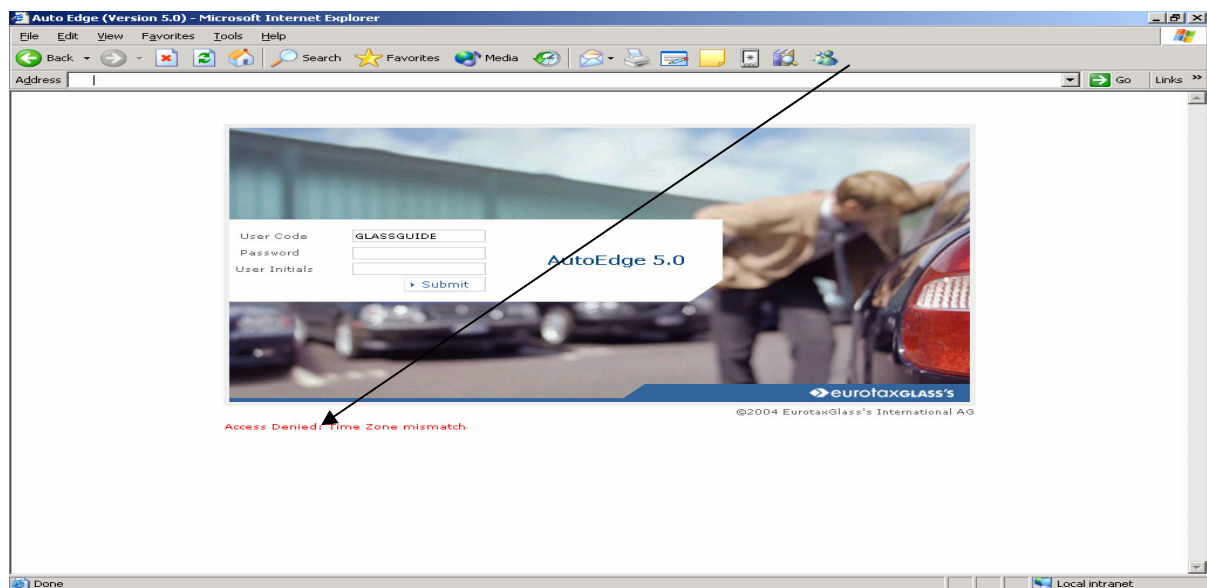
There are a number of key benefits available in the set-up and use of your Autoedgenet V5 Software and in summary they are:

1. Easy search process including the use of key word(s) i.e. type in vehicle details or choose from drop down menu.
2. Quick summary screen (see page 8).
3. Comprehensive details screen (see page 11).
4. Ability to print and email vehicle details.
5. Comprehensive options selection designed to be specific to the vehicle.

ACCESS

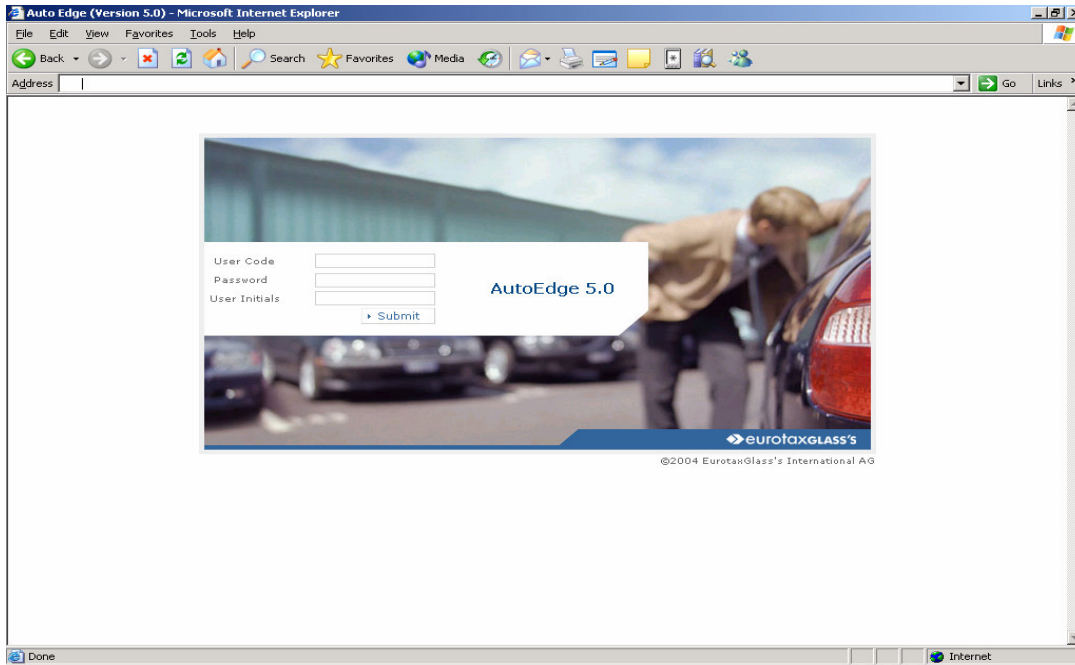
When the system is setup you will be given a URL, user code and password to access Autoedgenet V5. Current users of Autoedgenet V4 can use their current user code and password to access the new Autoedgenet V5.

This version of Autoedgenet V5 allows you to access the system via specific time zones and or IP addresses. For further details on how to set this please call Glass's Information Services. If you access the system outside your nominated time zone the following message will be displayed.



LOGIN

Login Screen



USER CODE: Enter the user code you have been assigned.

PASSWORD: Enter the password you have been assigned.

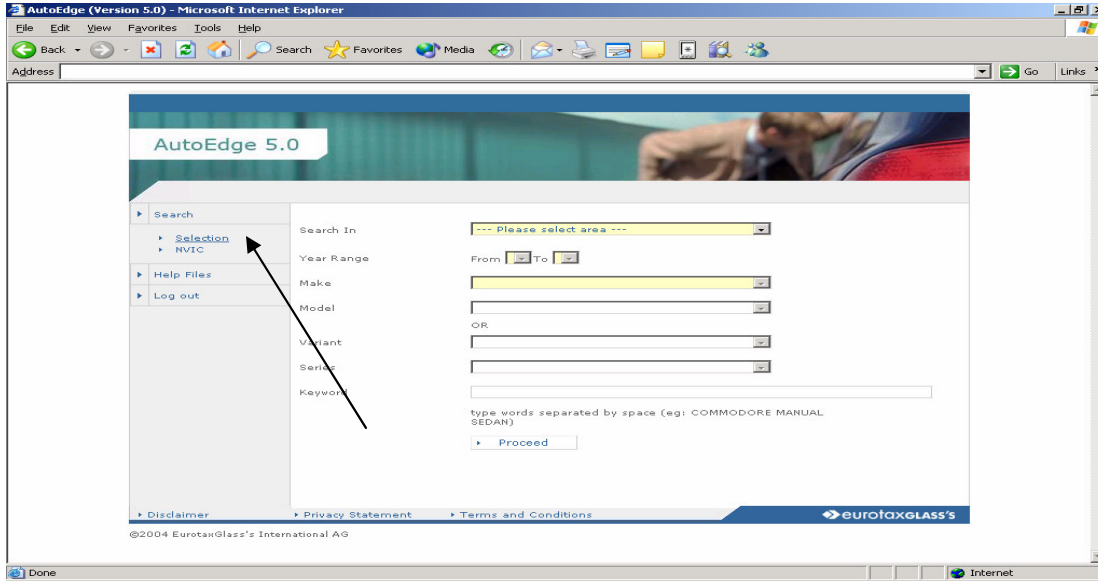
USER INITIALS: This is an optional field and is designed for those companies who have taken multiple licenses. It is recommended that the user enters their initials so that if a company has purchased 10 licenses and an eleventh user decides to log-in. The system will display a message advising the user, that the number of licenses have been exceeded. The system will then display the initials of the 10 users currently logged on.

PRESS THE “SUBMIT BUTTON”

TIME OUT: If there is no activity for a period of greater than 30 minutes the system will automatically log-out the user.

SELECTING A VEHICLE

After logging on the following screen will be displayed:



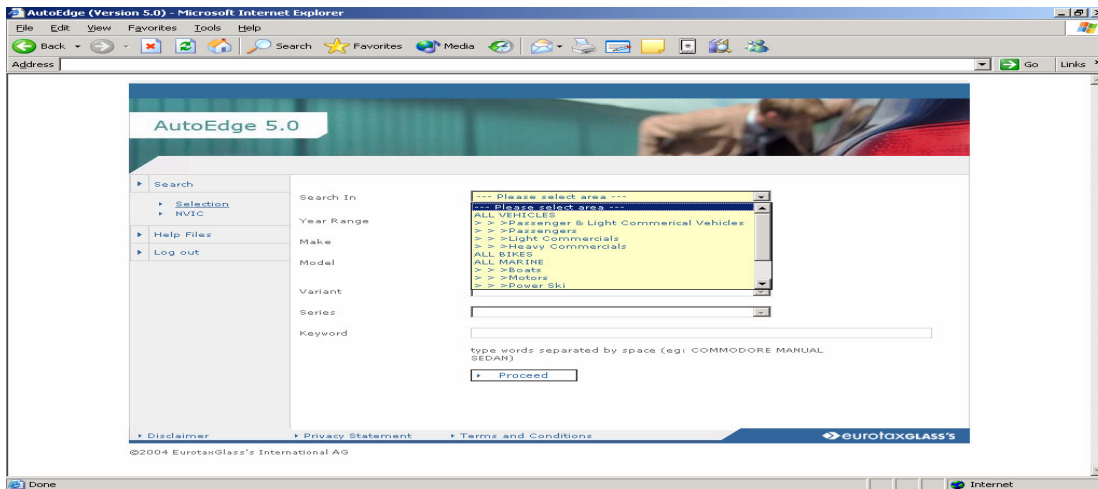
You have two choices to select a vehicle:

SELECTION – Search via drop down menus (as shown above).

NVIC – Search by NVIC code (see next page below).

SELECTION SEARCH

The vehicle selection is designed to get you to the desired vehicle simply and quickly:



SEARCH IN (Mandatory Field) – Based on your subscription you will have a series of selections. The available selections include ALL Vehicles, ALL Bikes, ALL Caravans and ALL Marine with sub selections under of the above categories. Click on the required selection.

YEAR RANGE (Mandatory Field) – You have the ability to search for a vehicle upto a three year range.

MAKE (Mandatory Field) – From the drop down list select the make. Alternatively you can type the first character of the make (eg. “F” for Ford) and the system will take you to the first make in the list starting with “F”.

MODEL or VARIANT (It’s mandatory to select one of the two options) –
MODEL – From the dropdown list select the model.

OR

VARIANT – From the dropdown list select the variant.

Eg Make Ford, Variant Ghia will display a Fairlane, Fiesta, Fairmont, Territory and Focus

SERIES (Not a mandatory field) – Based on the selections above the system will return a set of series codes (if applicable). It’s not necessary that all products will have a series code.

KEYWORD (Not a mandatory field) –To further refine your search you have the option to enter one or more key words (separated by a space). You can leave the Model or Variant field blank and enter a key word.

An example of a key word is:

Commodore Manual Sedan

The system will return all Commodore, Manual Sedans in the data base.

NOTE: If you have not completed a mandatory field the system will prompt you to do so.

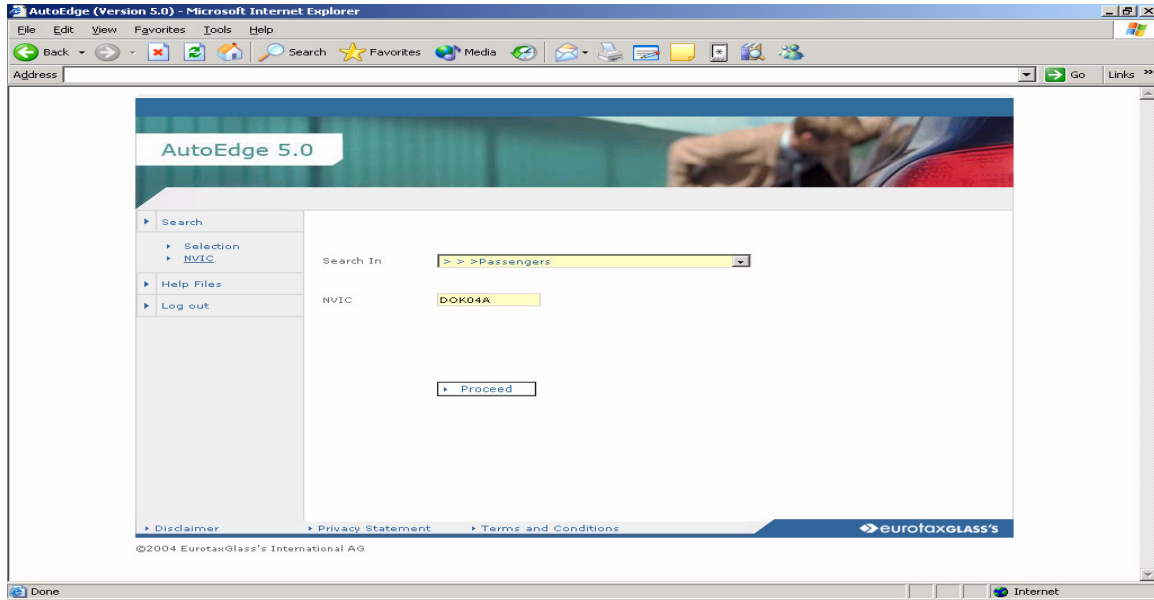
WHEN YOU HAVE COMPLETED YOUR SELECTION PRESS THE PROCEED BUTTON.

NVIC SEARCH

From the drop down list in “search in” select a category i.e. Passenger (or choose All Vehicles to search on all passenger and commercial vehicles).

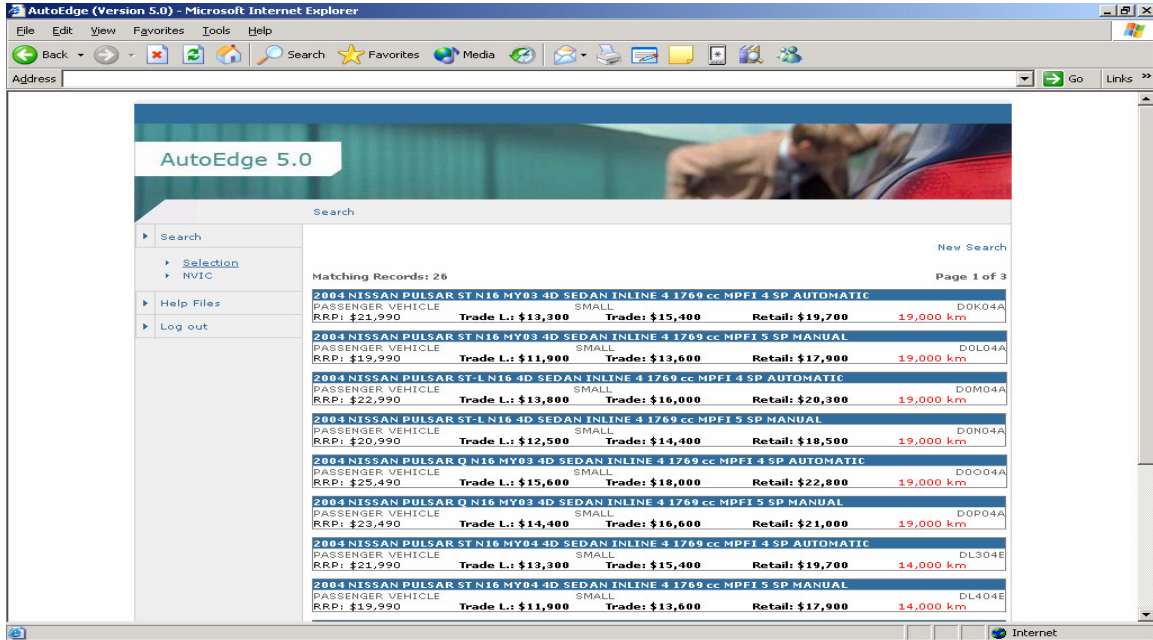
Enter your NVIC code and press “PROCEED”.

For further details click on the vehicle details (blue shaded bar).



MATCHING RECORDS

The following is a list of matching records based on the selection criteria:



All matching records will be displayed.

Each vehicle is displayed with the following information:

- Comprehensive model DESCRIPTION.
- The model CLASS (passenger, power ski, boat etc)
- NVIC code.
- Release Date
- Discontinued Date
- Recommended RETAIL price.
- Used price - Retail.
- Used price - Trade.
- Used price – Trade Low.
- AVERAGE KM the vehicle should have covered.

In many cases this information would be sufficient however if further information is required use your cursor and double click on the selected model for a comprehensive list of information on the vehicle.

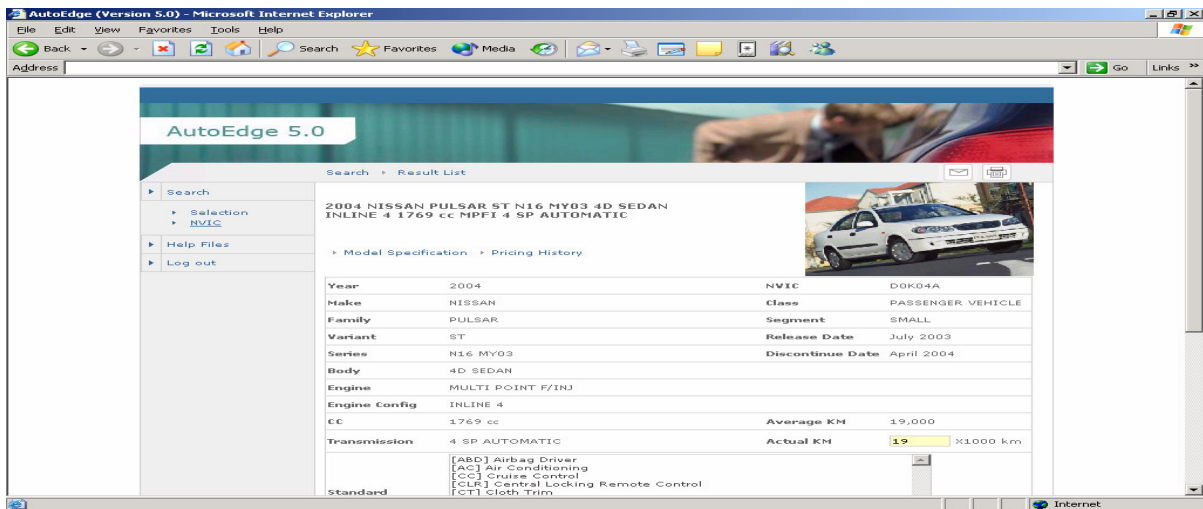
MODEL DETAILS, SPECIFICATION AND PRICING HISTORY

After selecting your model the model details screen appears. From this screen you can access

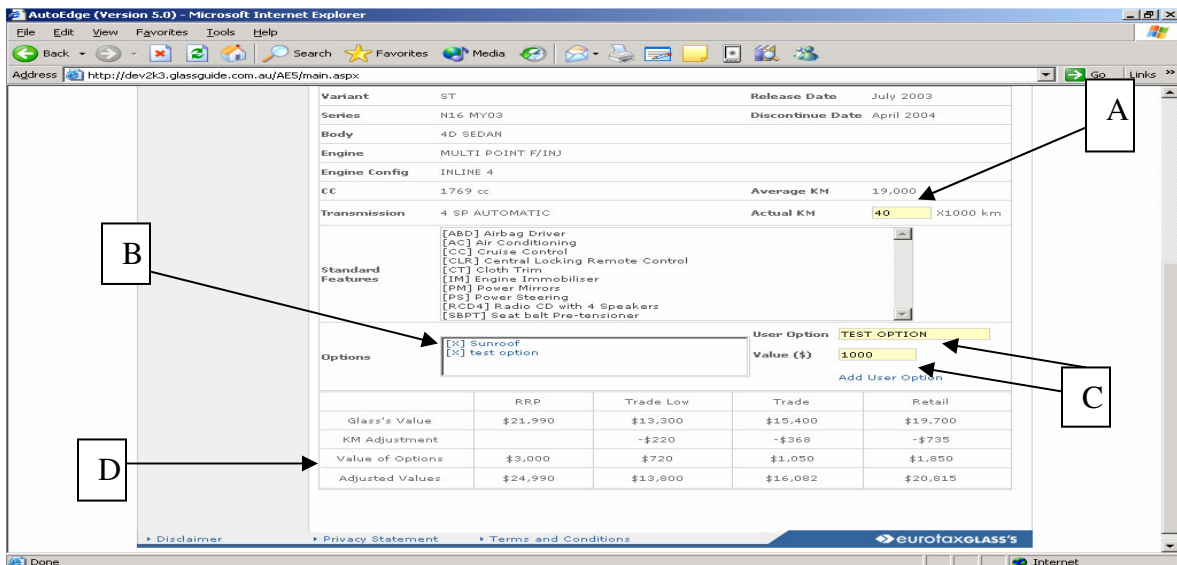
- **Model detail** information (the first screen that is displayed)
- **Model Specifications**
- **Pricing History** – 12 months.

MODEL DETAILS

PAGE 1 (Top of the screen)



PAGE 1 (Bottom of the screen)



In this screen the models key details are displayed along with:

- Standard features
- Optional features
- Model photograph
- Standard km for this vehicle.
- RRP and the three used values

KM ADJUSTMENT AND ADDING OPTIONS

A – Enter the actual km the vehicle has covered and the system will return an adjustment amount to the screen (D).

B – Lists all the options available on the specific model. The options displayed are only Manufacturer options.

C – For an option not listed you have the ability to add a description and the RRP for the option. There is no limit to the options that can be added. Please do not add options to a vehicle that do not add any used value to the vehicle. Examples of these category are headlight protectors, bonnet protectors, mud flaps, fabric protection etc. Once the option and RRP is entered the option will be displayed in the options screen.

D – Displays all the adjusted km and option values as selected in A, B and C.

EMAIL or PRINT – You have the option to either email or print the screen. This option is displayed on the top right of the screen.

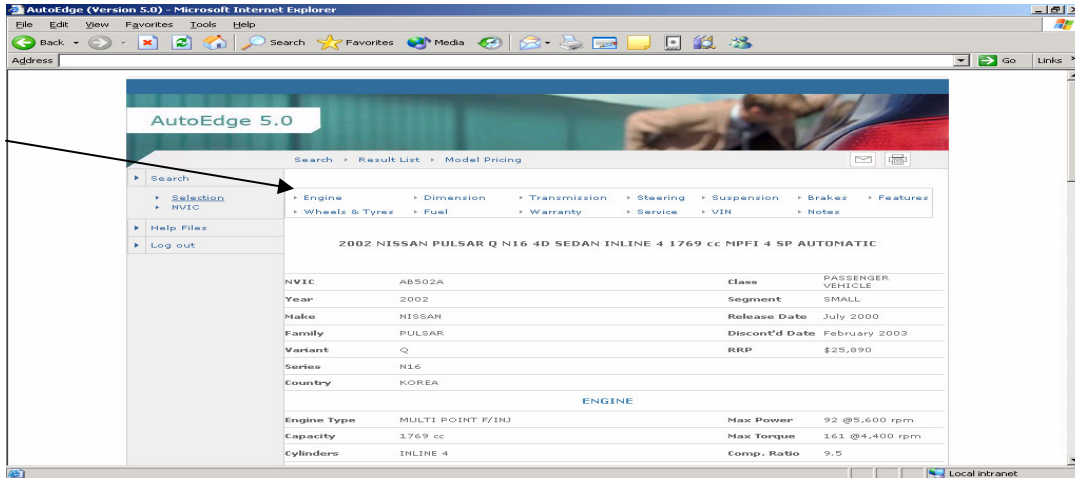
NOTE: The information displayed will vary from Automobile to Bikes, Caravan and Marine.

MODEL SPECIFICATION

To access the model specifications screen “click” on the “Model Specifications” button on the top left of the screen – as shown by the arrow below:



The following screen will be displayed. You can then scroll down to access all the relevant information or alternatively select the information (refer to the arrow below) from the list located at the top of screen.



The types of information available are:

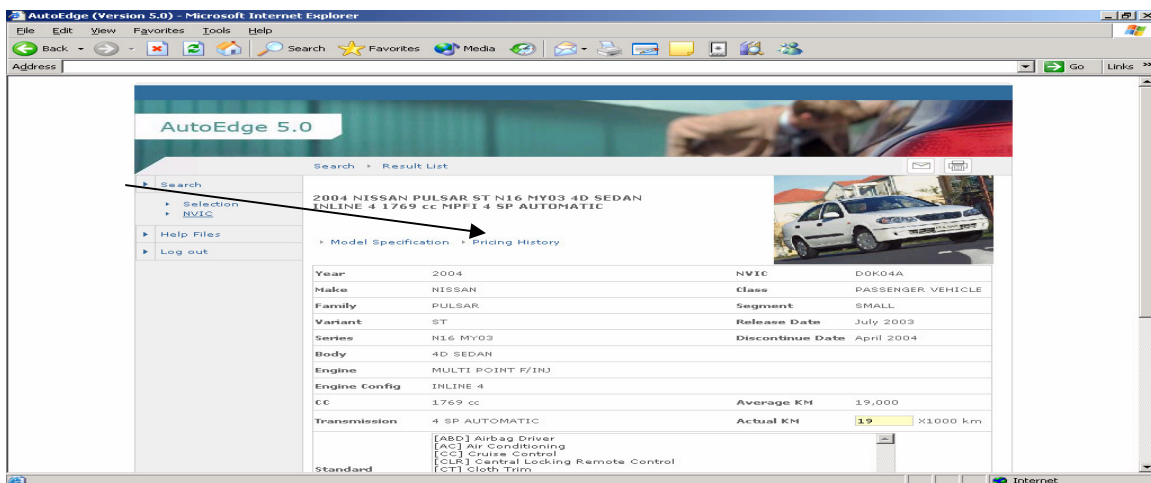
Engine, Dimension, Transmission, Steering, Suspension, Brakes, Features, Wheels and Tyres, Fuel, Warranty, Service, VIN and any key notes.

EMAIL or PRINT – You have the option to either email or print the screen. This option is displayed on the top right of the screen.

NOTE: The information displayed will vary from Automobile to Bikes, Caravan and Marine.

PRICING HISTORY

To access the pricing history screen “click” on the “Pricing History” button on the top left of the screen – as shown by the arrow below.



The following price history screen will be displayed.



NOTE: Special notes on information:

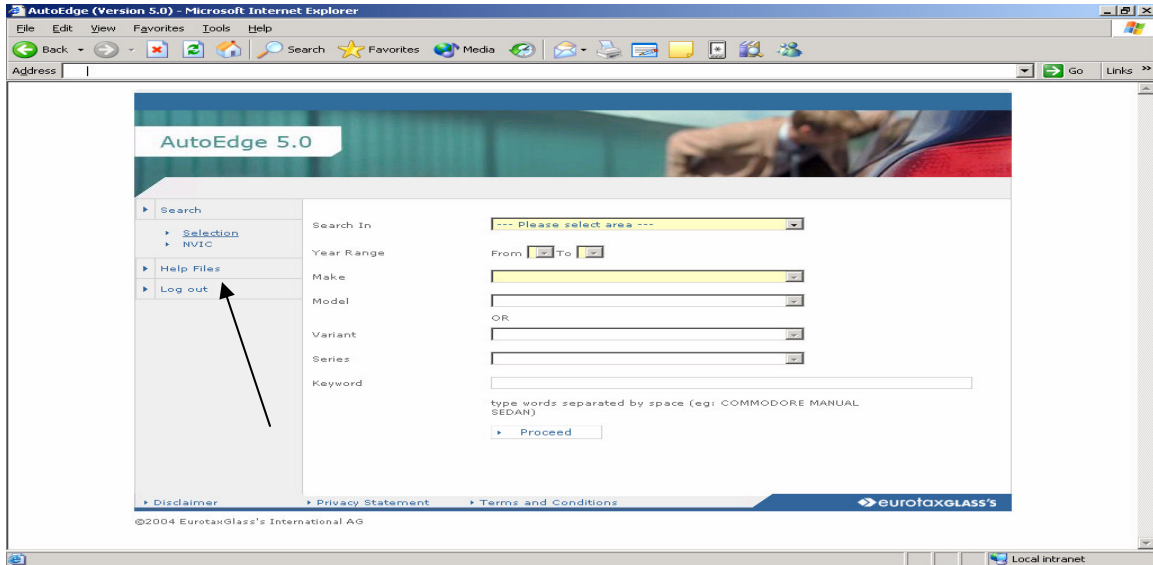
POA = RRP is not available for this model.

NSD = There was not sufficient data available to calculate the used value on the vehicle.

PRINT – You have the option to print the screen. This option is displayed on the top right of the screen.

HELP FILES

This section has all the definitions for all the abbreviations used in this product. The information is listed in a PDF file and can be downloaded for your convenience. In the event you do not have a copy of the relevant software (Adobe reader) then you have the option to download a free version of this software. The user documentation is also available from this screen.



Relevant information as displayed:

